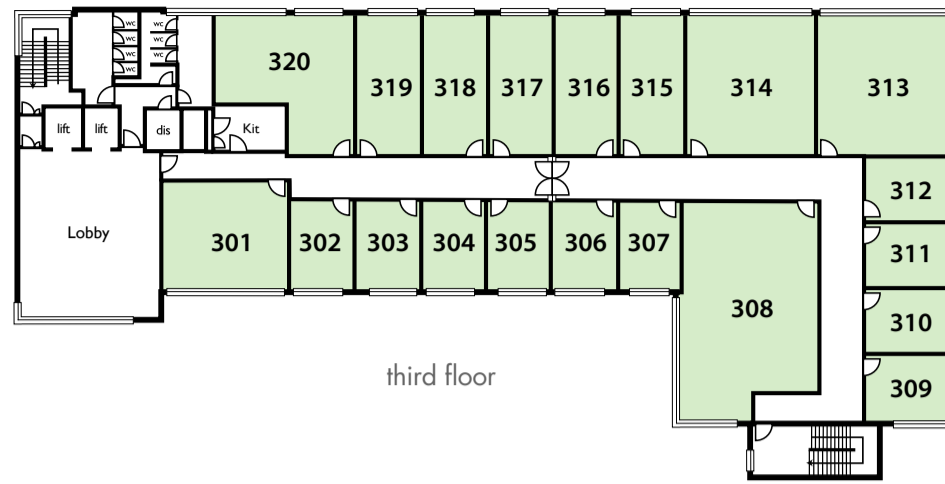


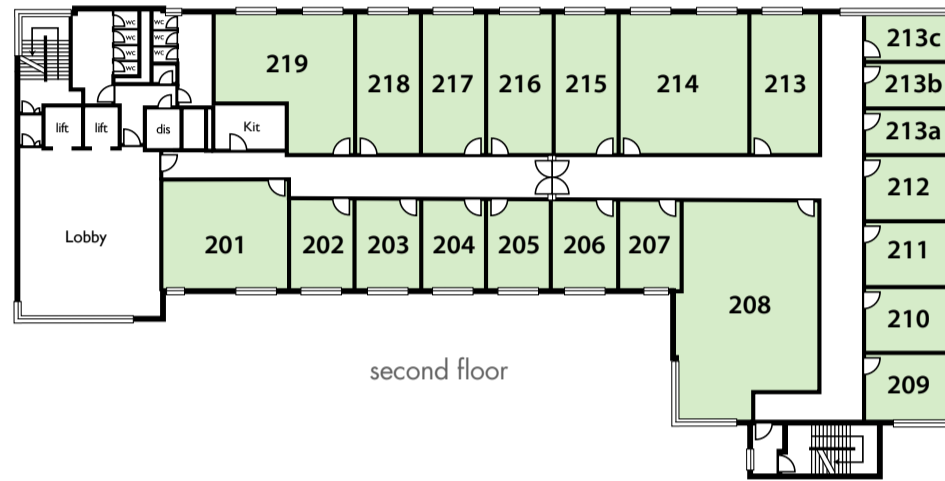
third floor

Unit No.	Area m <sup>2</sup>	Area f <sup>2</sup>
301	41.35	445
302	18.52	199
303	18.52	199
304	18.52	199
305	18.52	199
306	18.52	199
307	18.04	194
308	93.02	1000
309	18.52	199
310	18.38	198
311	18.52	199
312	18.41	198
313	61.70	664
314	58.68	632
315	28.85	311
316	28.80	310
317	28.80	310
318	28.80	310
319	28.80	310
320	50.94	549



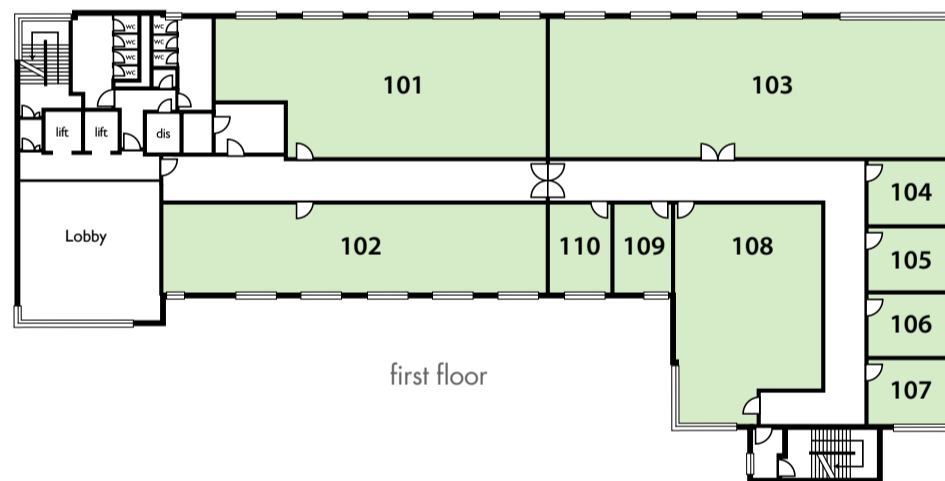
second floor

Unit No.	Area m <sup>2</sup>	Area f <sup>2</sup>
201	41.92	451
202	18.52	199
203	18.52	199
204	18.52	199
205	18.52	199
206	18.52	199
207	17.70	191
208	92.23	994
209	18.52	199
210	18.52	199
211	18.52	199
212	18.52	199
213	31.77	342
213a	13.00	140
213b	13.00	140
213c	13.00	140
214	59.32	639
215	29.19	314
216	29.19	314
217	29.19	314
218	29.19	314
219	51.79	558



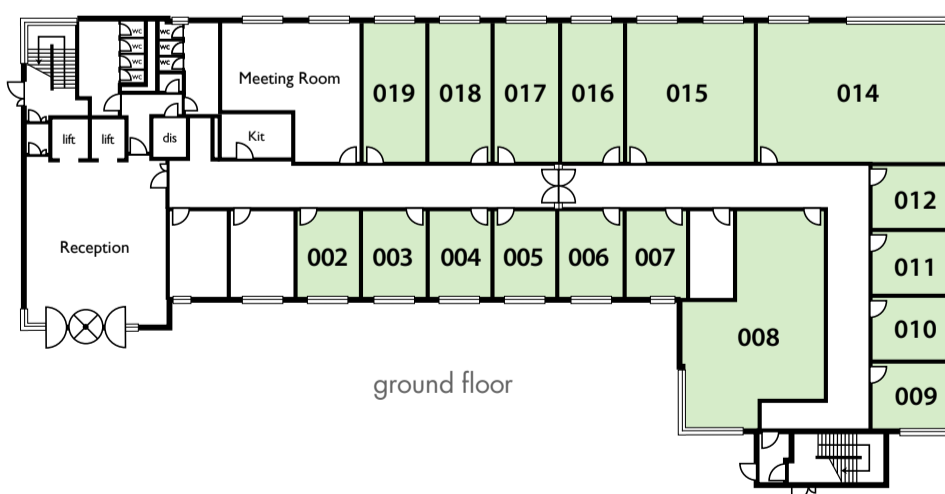
first floor

Unit No.	Area m <sup>2</sup>	Area f <sup>2</sup>
101	137.96	1,485
102	111.48	1,200
103	189.99	2,045
104	18.52	199
105	18.52	199
106	18.52	199
107	18.52	199
108	93.18	1,003
109	18.52	199
110	18.52	199



ground floor

Unit No.	Area m <sup>2</sup>	Area f <sup>2</sup>
002	18.52	199
003	18.52	199
004	18.52	199
005	18.52	199
006	18.52	199
007	17.70	191
008	78.73	849
009	18.52	199
010	18.52	199
011	18.52	199
012	18.52	199
014	92.31	994
015	59.32	639
016	29.19	314
017	29.19	314
018	29.19	314
019	29.19	314



# Basepoint Business Centre Camberley

\*dis - disabled wc