

ground floor

Unit No.	Area m <sup>2</sup>	Area f <sup>2</sup>
1	18	190
2	18	190
3	19	200
4	19	200
7	19	205
8	31	335
9	30	325
10	30	325
44a	33	355
44b	28	297
45	117	1260
46	62	670
54	18	200
55	11	120
56	19	205
57	16	175
58	16	175
59	16	175
60	26	280
61	26	280

workshop

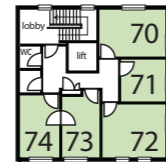
Unit No.	Area m <sup>2</sup>	Area f <sup>2</sup>
22	33	355
23	33	355
24	40	430
25	40	430
26	40	430
27	40	430
28	66	710
29	66	710
30	66	710
31	66	710
32	68	735
33	69	740
34	69	740
35	35	375
36	35	375
37	46	495
38	46	495
39	67	720
40	56	600
41	56	600
42	56	600
43	56	600
75	43	460
76	43	460
77	43	460
78	43	460
79	43	460
86	40	430
87	40	430
88	40	430
89	40	430

first floor

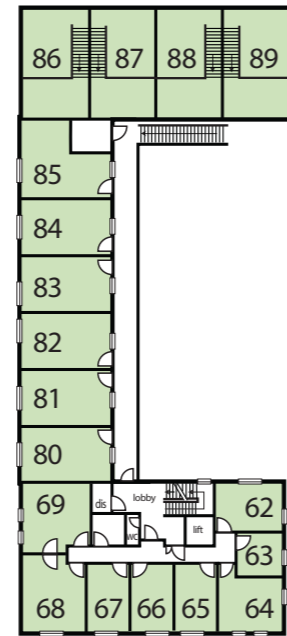
Unit No.	Area m <sup>2</sup>	Area f <sup>2</sup>
11	40	430
12	28	300
14	40	430
15	38	405
16	40	430
17	24	255
18	24	255
19	24	255
20	24	255
21	40	430
47	41	440
48	52	560
49	27	290
50	21	225
51	21	225
52	21	225
53	62	670
62	19	205
63	11	120
64	19	205
65	16	175
66	16	175
67	16	175
68	26	280
69	26	280
80	29	310
81	29	310
82	29	310
83	29	310
84	29	345
85	32	310
86	40	430
87	40	430
88	40	430
89	40	430

second floor

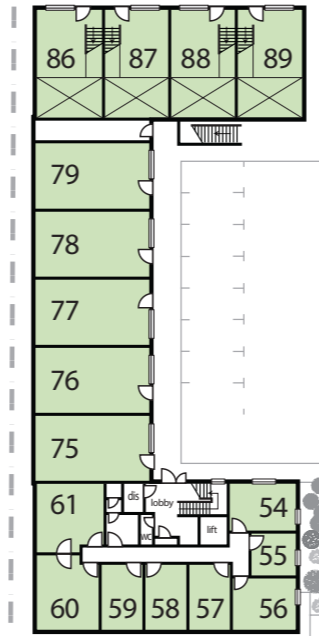
Unit No.	Area m <sup>2</sup>	Area f <sup>2</sup>
70	19	205
71	11	120
72	19	205
73	15	160
74	14	150



second floor

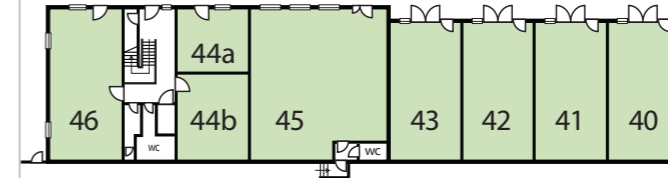
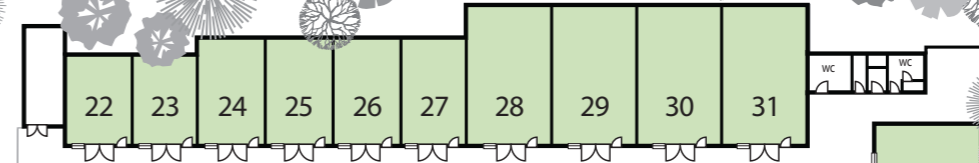


first floor

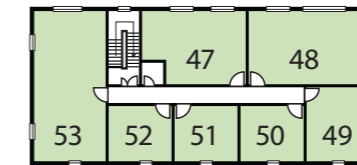


ground floor

first floor



first floor



first floor



# Basepoint Business Centre High Wycombe

\*dis - disabled wc