

ground floor

Unit No.	Area m <sup>2</sup>	Area f <sup>2</sup>
1	17.2	185
2	17.7	190
3	17.2	185
4	31.1	335
5	22.3	240
5a	13.1	141
6	34.4	370
7	28.8	310
8	16.7	180
9	58.1	625
10	45.5	490
11	55.2	595
12	28.2	304
14	13.4	144
15	13.4	144
16	24.8	267
17	17.3	186
18	17.3	186

workshops

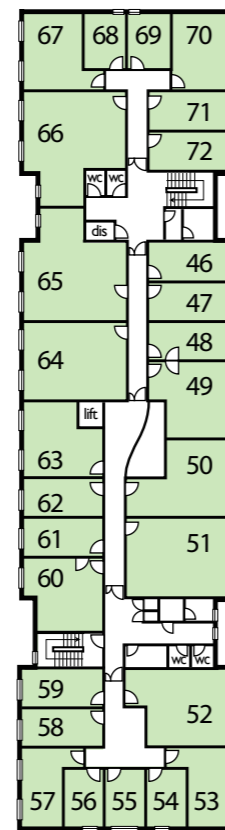
Unit No.	Area m <sup>2</sup>	Area f <sup>2</sup>
73	36.7	395
74	37.2	400
75	37.2	400
76	37.6	405
77	37.6	405
83	56.2	605
84	56.2	605
85	56.2	605
86	56.2	605
87	56.2	605
88	53.0	570
89	53.0	570
90	37.6	405
91	37.6	405
92	41.8	450
93	53.0	570
94	53.0	570
95	76.2	820
96	76.2	820

first floor

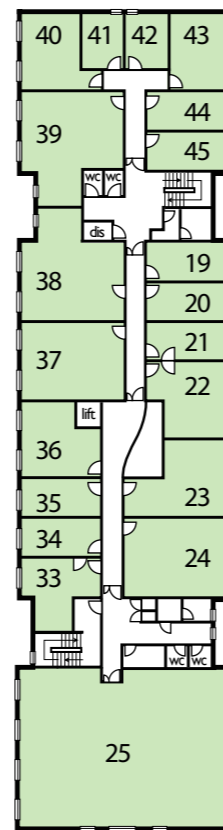
Unit No.	Area m <sup>2</sup>	Area f <sup>2</sup>
19	17.2	185
20	17.7	190
21	17.2	185
22	31.1	335
23	36.2	390
24	45.5	490
25	179.8	1938
33	24.6	265
34	17.2	185
35	17.7	190
36	30.7	330
37	45.5	490
38	54.8	590
39	55.2	595
40	28.2	304
41	13.4	144
42	13.4	144
43	24.8	267
44	17.3	186
45	17.3	186
78	27.9	300
79	27.9	300
80	40.0	430
81	28.3	305
82	28.3	305

second floor

Unit No.	Area m <sup>2</sup>	Area f <sup>2</sup>
46	17.2	185
47	17.7	190
48	17.2	185
49	31.1	335
50	36.2	390
51	45.5	490
52	39.8	428
53	20.0	215
54	13.0	140
55	13.0	140
56	13.0	140
57	20.0	215
58	17.7	190
59	16.7	180
60	30.2	325
61	17.2	185
62	17.7	190
63	30.7	330
64	45.5	490
65	54.8	590
66	55.2	595
67	28.2	304
68	13.4	144
69	13.4	144
70	24.8	267
71	17.3	186
72	17.3	186



second floor



first floor



ground floor

first floor

# Basepoint Business Centre Swindon

\*dis - disabled wc